

# FOR SALE INDUSTRIAL CONDOMINIUMS



## 1279 W. Stowell, Ste. A & D | Santa Maria, CA

Two Industrial condos located near the intersection of West Stowell Road and South Blosser Road.

Mike Kelly  
805.928.2800 ext. 113  
Mike@PacificaCRE.com  
Lic #01800988

Pat Palangi  
805.928.2800 ext. 105  
Pat@PacificaCRE.com  
Lic #01105680

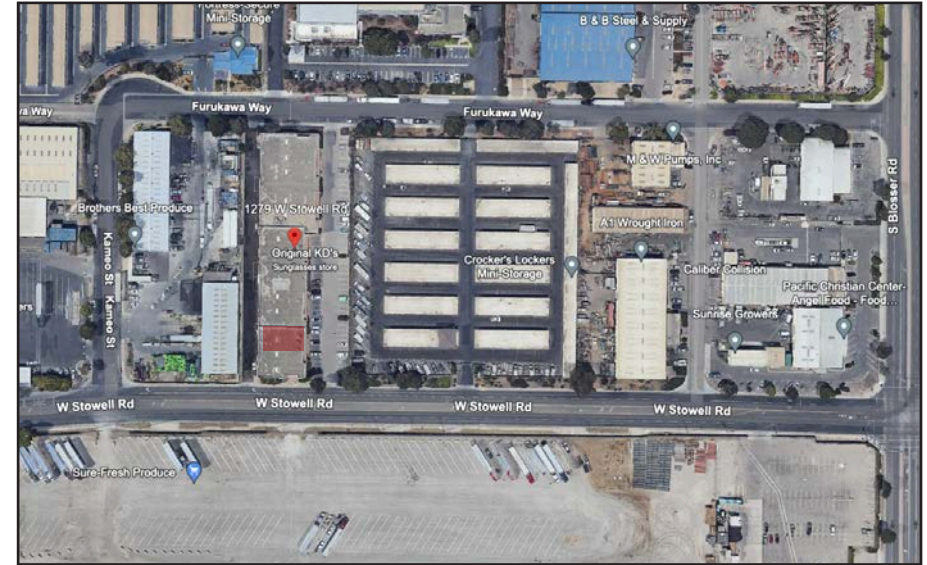
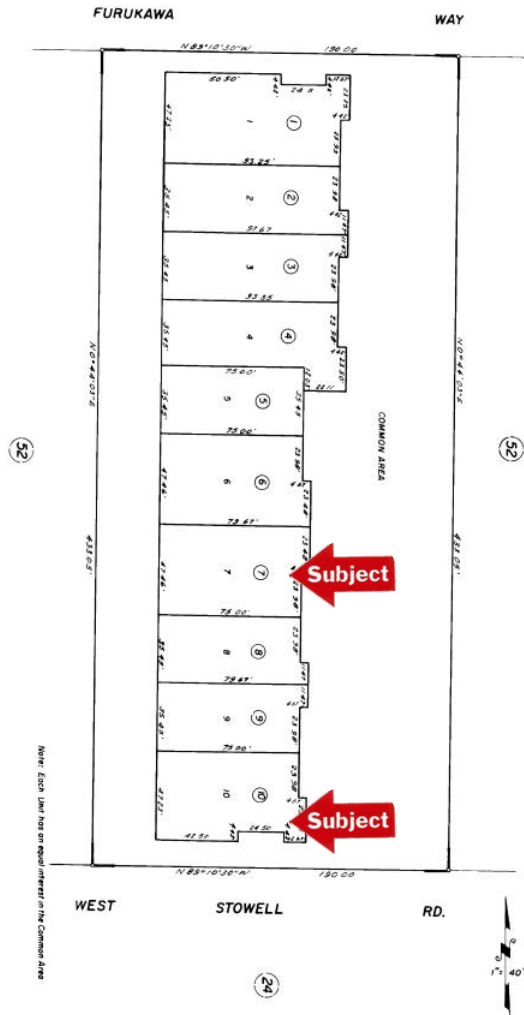
Jerry Schmidt  
805.928.2800 ext. 107  
Jerry@PacificaCRE.com  
Lic #0095042

2520 Professional Parkway | Santa Maria, CA 93455 | [PacificaCommercialRealty.com](http://PacificaCommercialRealty.com)



Information contained herein has been obtained from the owner of the property or from other sources deemed reliable. We have no reason to doubt its accuracy, but we do not guarantee it.

# FOR SALE 1279 W. STOWELL, STE. A & D, SANTA MARIA, CA



Property Information			
Unit	SF	Total Price	APN
A	+/-3,638	\$650,000	117-590-010
D	+/-3,750	\$650,000	117-590-007
Zoning		PD-M2	

Two separate industrial condos with minimal office improvements and majority open warehouse.

Mike Kelly  
805.928.2800 ext. 113  
Mike@PacificaCRE.com  
Lic #01800988

Pat Palangi  
805.928.2800 ext. 105  
Pat@PacificaCRE.com  
Lic #01105680

Jerry Schmidt  
805.928.2800 ext. 107  
Jerry@PacificaCRE.com  
Lic #0095042

2520 Professional Parkway | Santa Maria, CA 93455 | PacificaCommercialRealty.com



Information contained herein has been obtained from the owner of the property or from other sources deemed reliable. We have no reason to doubt its accuracy, but we do not guarantee it.