

FOR LEASE INDUSTRIAL WAREHOUSE BUILDING



Property Information	
Price	Inquire
Land Size	±8.48 Acres
Building Size	±132,108 SF
Zoning	PD-M1
Clear Ht.	±26'
Loading	7 Docks + Grade Level
Parking Field	561+ Spaces
Column Spacing	48' x 40'
Available	Immediately
High pile storage sprinkler system	
Heavy power available (2,000 amps, 480/227 v, 3 phase)	

1335 South Bradley | Santa Maria, California

Industrial Warehouse | ±30,000 - ±132,000 SF, with building expansion options up to a total of 170,000 SF

Former distribution warehouse and former Costco store. Immediately adjacent to Highway 101 on/off ramps in Central Santa Maria on California's Central Coast. Halfway between Los Angeles and San Francisco and two hours away from Bakersfield and Fresno.



Jerry Schmidt
805.928.2800 ext. 107
Jerry@PacificaCRE.com
Lic #00956042

Pat Palangi
805.928.2800 ext. 105
Pat@PacificaCRE.com
Lic #01105680

Chris Garner
805.928.2800 ext. 104
CGarner@PacificaCRE.com
Lic #01010310

2520 Professional Parkway | Santa Maria, CA 93455 | PacificaCommercialRealty.com



Information contained herein has been obtained from the owner of the property or from other sources deemed reliable. We have no reason to doubt its accuracy, but we do not guarantee it.

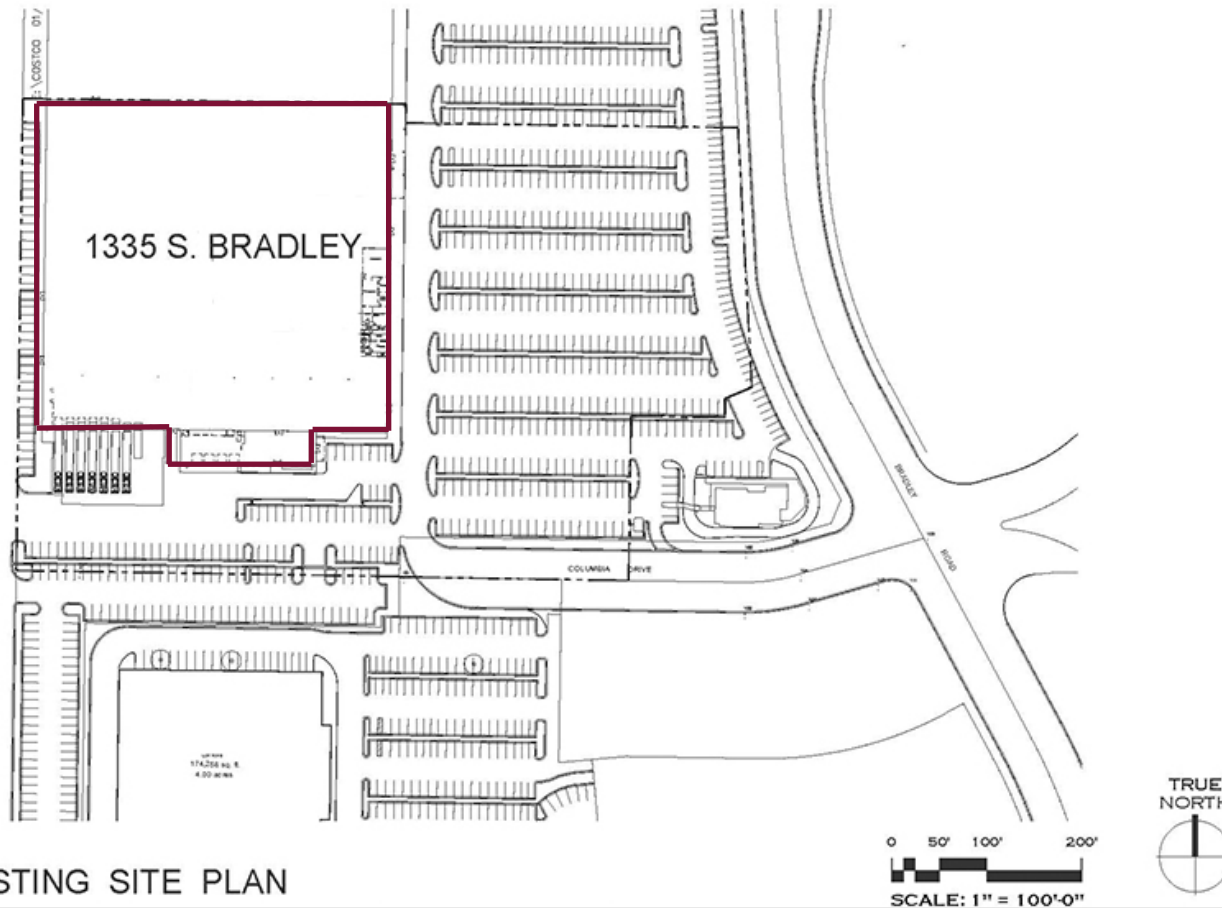
FOR LEASE 1335 South Bradley Road | Santa Maria, CA



2520 Professional Parkway | Santa Maria, CA 93455 | PacificaCommercialRealty.com

Information contained herein has been obtained from the owner of the property or from other sources deemed reliable. We have no reason to doubt its accuracy, but we do not guarantee it.

FOR LEASE 1335 South Bradley Road | Santa Maria, CA



Industrial warehouse building available in North Santa Barbara County. Approximately halfway between Los Angeles and San Francisco and two hours from Central Valley. Immediate access to Highway 101. Former Columbia Records warehouse and former Costco. Largest space available in Central Coast.

FOR LEASE 1335 South Bradley Road | Santa Maria, CA



2520 Professional Parkway | Santa Maria, CA 93455 | PacificaCommercialRealty.com

Information contained herein has been obtained from the owner of the property or from other sources deemed reliable. We have no reason to doubt its accuracy, but we do not guarantee it.

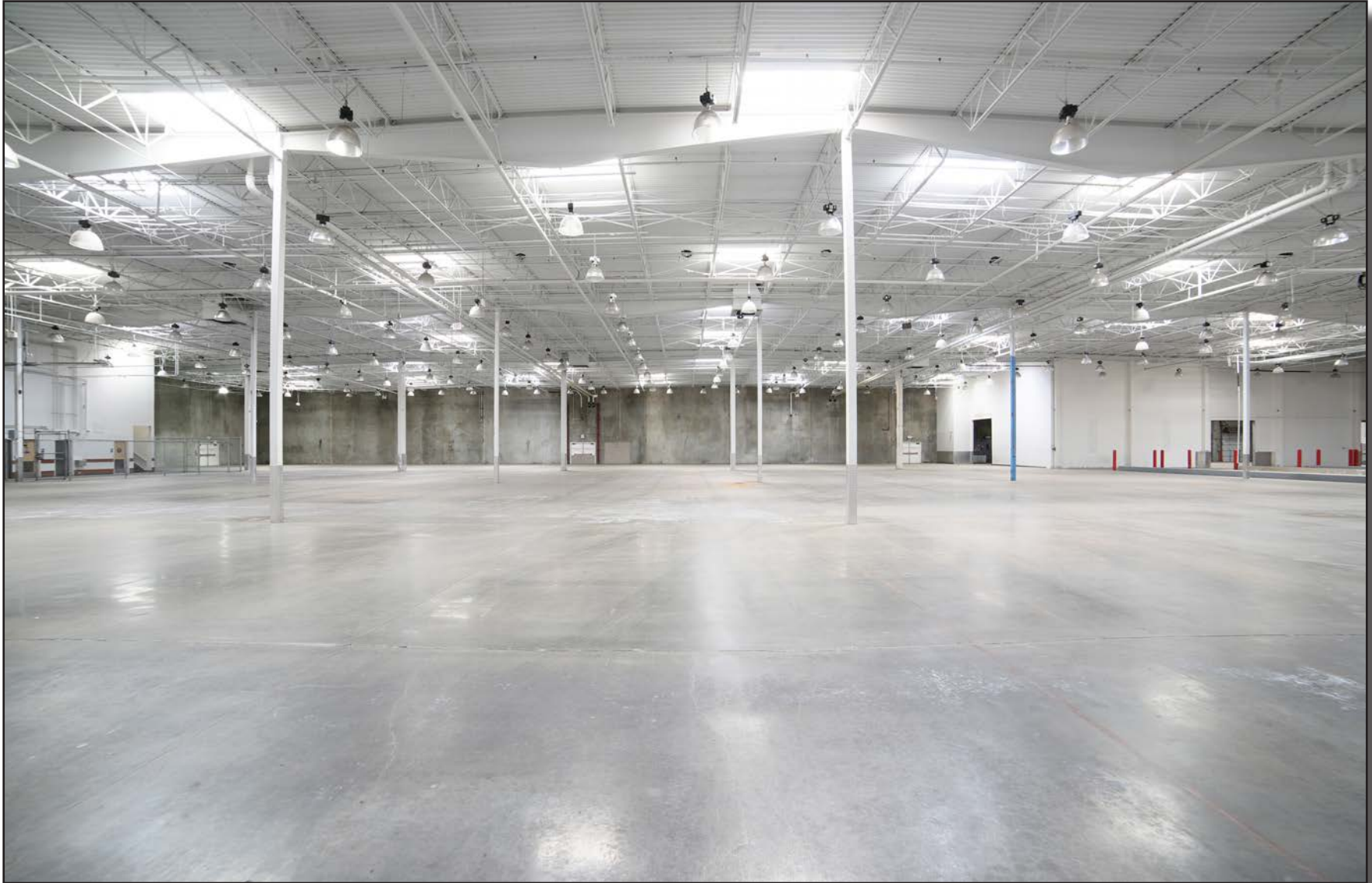
FOR LEASE 1335 South Bradley Road | Santa Maria, CA



2520 Professional Parkway | Santa Maria, CA 93455 | PacificaCommercialRealty.com

Information contained herein has been obtained from the owner of the property or from other sources deemed reliable. We have no reason to doubt its accuracy, but we do not guarantee it.

FOR LEASE 1335 South Bradley Road | Santa Maria, CA



2520 Professional Parkway | Santa Maria, CA 93455 | PacificaCommercialRealty.com

Information contained herein has been obtained from the owner of the property or from other sources deemed reliable. We have no reason to doubt its accuracy, but we do not guarantee it.