

# FOR LEASE OFFICE SPACE



## Property Details

- Suite Size: +/-2,350 SF
- Parking: Per City Code
- APN: 111-560-037
- Zoning: CPO-PD
- \$1.75/SF/Month, NNN
- Currently occupied. Call agent for access.

## 2529 Professional Parkway, Suite B | Santa Maria, CA

Rare opportunity for an excellent professional office space in desirable business corridor. Easy access to downtown and Hwy 101. Efficient layout includes conference room, large executive offices, and work area. Great layout (see floor plan on back).

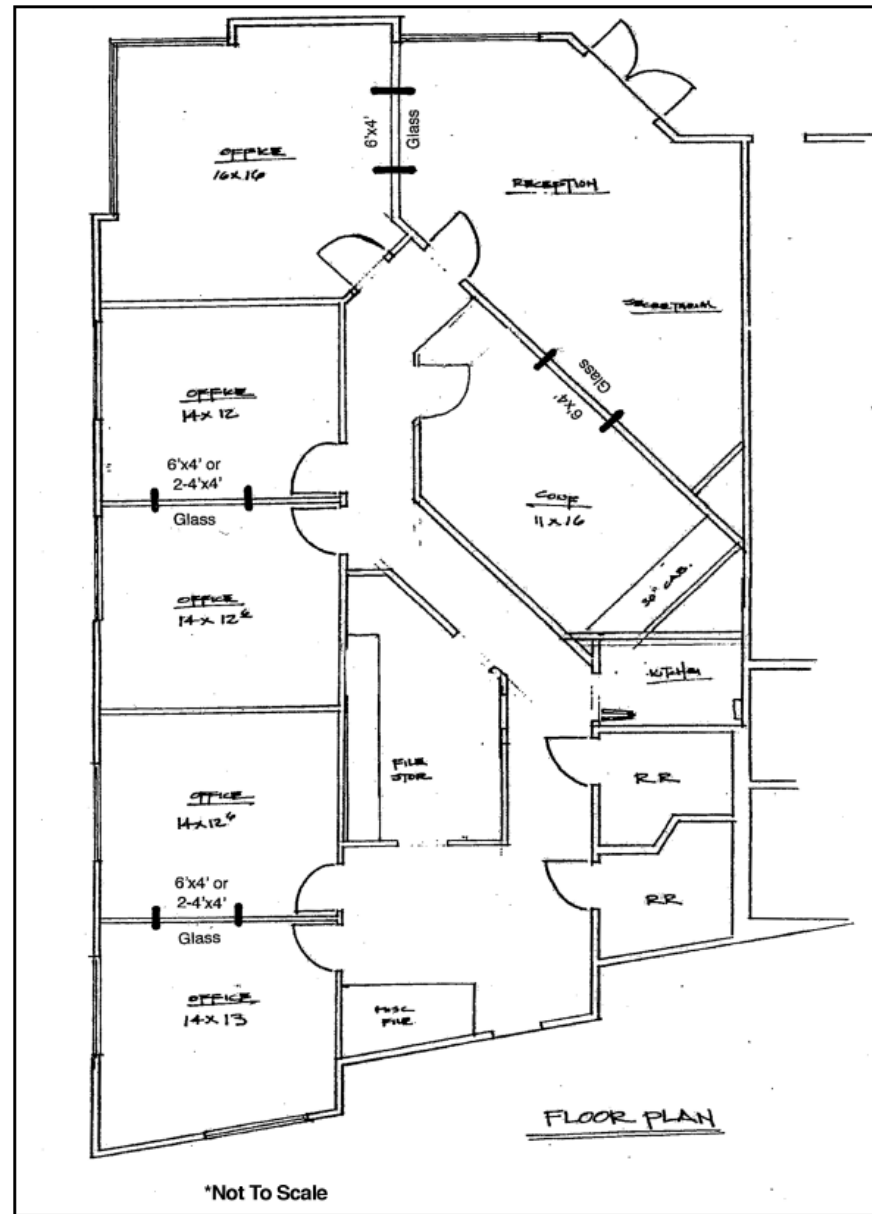
Chris Garner  
805.928.2800 ext. 104  
CGarner@PacificaCRE.com  
Lic #01010310



2520 Professional Parkway | Santa Maria, CA 93455 | [PacificaCommercialRealty.com](http://PacificaCommercialRealty.com)

Information contained herein has been obtained from the owner of the property or from other sources deemed reliable. We have no reason to doubt its accuracy, but we do not guarantee it.

# FOR LEASE 2529 Professional Parkway | Santa Maria, CA



\*All measurements and walls are approximate

Chris Garner  
805.928.2800 ext. 104  
CGarner@PacificaCRE.com  
Lic #01010310

2520 Professional Parkway | Santa Maria, CA 93455 | [PacificaCommercialRealty.com](http://PacificaCommercialRealty.com)



Information contained herein has been obtained from the owner of the property or from other sources deemed reliable. We have no reason to doubt its accuracy, but we do not guarantee it.